

2V0-620.exam.105q

Number: 2V0-620
Passing Score: 800
Time Limit: 120 min



Website: <https://vceplus.com>
VCE to PDF Converter: <https://vceplus.com/vce-to-pdf/>
Facebook: <https://www.facebook.com/VCE.For.All.VN/>
Twitter : https://twitter.com/VCE_Plus

<https://vceplus.com/>

2V0-620

vSphere 6 Foundations Exam

Exam A

QUESTION 1

An administrator has just completed performing an interactive installation of ESXi 6.x and is booting the host.



<https://vceplus.com/>

How is the network initially configured?

- A. The network is configured by Automatic Private IP Addressing (APIPA).
- B. The network is configured based on the settings detected in DNS.
- C. The network is configured with the address as specified in the installer.
- D. The network is automatically configured by DHCP.

Correct Answer: D

Section: (none)

Explanation

Explanation/Reference:

Explanation:

Network is automatically configured by DHCP

Reference: <https://pubs.vmware.com/vsphere-60/topic/com.vmware.ICbase/PDF/vsphere-esxi-vcenter-server-60-installation-setup-guide.pdf>

QUESTION 2

An administrator has just completed installing an ESXi 6.x host, but doesn't know what address has been configured.

Where is the ESXi host IP address configured?

- A. RVC console
- B. Direct Console User Interface
- C. vSphere Web Client
- D. vSphere Client

Correct Answer: B

Section: (none)

Explanation

Explanation/Reference:

Explanation:

Access Direct Console User Interface to configure ESXi host IP address.

Reference: <http://www.virtualizationadmin.com/articles-tutorials/vmware-esx-and-vsphere-articles/installation-and-deployment/understanding-vmware-esxi-directconsole-user-interface-dcui.html>

QUESTION 3

An administrator has just configured the IP address on an ESXi host from the Direct Console User Interface.

How can the configuration be validated as correct without any additional tools?

- A. Add the host to vCenter Server and if it works, then all networking settings are ok.
- B. Select the Test Management Network option from the DCUI.
- C. Connect to the host with the vSphere Client and click the Test Network option.
- D. Use PowerCLI to connect to the host and initiate a network test.

Correct Answer: B

Section: (none)

Explanation

Explanation/Reference:

Explanation:

This DCUI interface offers the following:

- Configure Root password
- Configure Lockdown mode
- Configure Management network
- Restart Management Network
- Test or disable Management
- Configure Keyboard
- View Support Information
- View System Logs
- Restart Management Network
- Reset System Configuration

- Remove Custom Extensions
- Shutdown or Restart /Reboot the ESXi Server

Reference: <http://www.virtualizationadmin.com/articles-tutorials/vmware-esx-and-vsphere-articles/installation-and-deployment/understanding-vmware-esxi-directconsole-user-interface-dcui.html>

QUESTION 4

An administrator has recently installed a new ESXi 6.x Host, and during the configuration notices sporadic network problems. To check whether the issue occurred sometime during the configuration, the administrator would like to reset the system.

How can this be accomplished in the shortest amount of time?

- A. Run the ESXi installer again and reinstall the host.
- B. Select the Reset System Configuration option from the vSphere Client when connected directly to the host.
- C. From the Direct Console User Interface, select Reset System Configuration.
- D. Use a host profile to reset the configuration to a default state.

Correct Answer: C

Section: (none)

Explanation

Explanation/Reference:

Explanation:

This DCUI interface offers the following:

- Configure Root password
- Configure Lockdown mode
- Configure Management network
- Restart Management Network
- Test or disable Management
- Configure Keyboard
- View Support Information
- View System Logs
- Restart Management Network
- Reset System Configuration
- Remove Custom Extensions
- Shutdown or Restart /Reboot the ESXi Server



Reference: <http://www.virtualizationadmin.com/articles-tutorials/vmware-esx-and-vsphere-articles/installation-and-deployment/understanding-vmware-esxi-directconsole-user-interface-dcui.html>

QUESTION 5

An administrator is given a bash script that retrieves data for ESXi 6.x host configurations. This data needs to be collected right after the installation of a host and must be run directly on the host.

Which two actions can be used to run this script on an ESXi host? (Choose two.)

- A. Connect to the host with Ruby vSphere Console and run the script from there.
- B. Enable SSH access from the Direct Console User Interface.
- C. Enable the ESXi Shell from the Direct Console User Interface.
- D. Run the script directly from the vSphere Web Client.

Correct Answer: BC

Section: (none)

Explanation

Explanation/Reference:

Explanation:

The Direct Console User Interface (DCUI) allows you to interact with the host locally using text-based menus. You can use the Direct Console User Interface to enable local and remote access to the ESXi Shell.

Reference: https://pubs.vmware.com/vsphere-50/index.jsp?topic=%2Fcom.vmware.vsphere.security.doc_50%2FGUID-94F0C54F-05E3-4E16-80270280B9ED1009.html

QUESTION 6

What is the default load balancing policy for a newly created VMkernel port on a vSphere Distributed Switch?

- A. Route based on originating virtual port ID
- B. Route based on IP Hash
- C. Route based on source mac address
- D. Route based on physical NIC load

Correct Answer: A

Section: (none)

Explanation

Explanation/Reference:

Explanation:

The default load balancing policy is route based on originating virtual port ID.

Reference: <https://pubs.vmware.com/vsphere-60/topic/com.vmware.ICbase/PDF/vsphere-esxi-vcenter-server-60-networking-guide.pdf> (page 47)

QUESTION 7

How are ports scaled on vSphere Standard Switches (vSS)?

- A. Ports on a vSS can be dynamically scaled up and down.
- B. Ports on a vSS can only be statically scaled up or down.
- C. Ports on a vSS can only be dynamically scaled down.
- D. Ports on a vSS can only be dynamically scaled up.

Correct Answer: A

Section: (none)

Explanation

Explanation/Reference:

Explanation:

To ensure efficient use of host resources on hosts running ESXi 5.5 and later, the number of ports of standard switches are dynamically scaled up and down. A standard switch on such a host can expand up to the maximum number of ports supported on the host.

Reference: <https://pubs.vmware.com/vsphere-60/index.jsp?topic=%2Fcom.vmware.vsphere.networking.doc%2FGUID-350344DE-483A-42ED-B0E2C811EE927D59.html>

QUESTION 8

Which three connection types are available when configuring a vSwitch in the vSphere Web Client? (Choose three.)

- A. VMkernel Network Adapter
- B. Physical Network Adapter
- C. Virtual Machine Port Group for a Standard Switch
- D. vMotion Network Adapter
- E. vSAN Network Adapter

Correct Answer: ABC

Section: (none)

Explanation

Explanation/Reference:

Explanation:

Vmkernel network adapter, physical network adapter and virtual machine port group for standard switch are the connection types available when configuring Switch in vSphere client.

Reference: <https://pubs.vmware.com/vsphere-55/topic/com.vmware.ICbase/PDF/vsphere-esxi-vcenter-server-55-networking-guide.pdf>

QUESTION 9

How many Link Aggregation Groups (LAGs) can be configured on a vSphere 6.x Distributed Switch?

A. 64



<https://vceplus.com/>

B. 96

C. 128

D. 256



Correct Answer: A

Section: (none)

Explanation

Explanation/Reference:

Explanation:

You can create up to 64 LAGs on a distributed switch. A host can support up to 32 LAGs. However, the number of LAGs that you can actually use depends on the capabilities of the underlying physical environment and the topology of the virtual network. For example, if the physical switch supports up to four ports in an LACP port channel, you can connect up to four physical NICs per host to a LAG.

Reference: <https://pubs.vmware.com/vsphere-55/index.jsp?topic=%2Fcom.vmware.vsphere.networking.doc%2FGUID-0D1EF5B4-7581-480B-B99D5714B42CD7A9.html>

QUESTION 10

An administrator is configuring the Failover Order option on a vSphere Distributed Switch.

Which two options should be used with IP-hash load balancing? (Choose two.)

- A. Active Uplinks
- B. Standby Uplinks
- C. Unused Uplinks
- D. Override Failover Order

Correct Answer: AC

Section: (none)

Explanation

Explanation/Reference:

Explanation:

Active Uplinks, and Unused adapter Uplinks are used with IP hash load balancing.

Reference: <https://books.google.com.pk/books?id=35TE4cSycNAC&pg=PA201&lpg=PA201&dq=IP+hash+load+balancing+active+uplinks+unused+uplinks&source=bl&ots=ggg8VOCpw4&sig=EaqvN49-p2UWQ5b6V53SkFFmJhc&hl=en&sa=X&ved=0ahUKEwiv1ruEhMbNAhVGL48KHfXaBN4Q6AEIUzAJ#v=onepage&q=IP%20hash%20load%20balancing%20active%20uplinks%20unused%20uplinks&f=false>

QUESTION 11

An administrator is creating a new vSphere Distributed Switch that will be utilized with a specific vSphere Cluster. The cluster itself contains a mix of ESXi 5.x and 6.x Hosts.

Which Distributed Switch version should be created to support this configuration?

- A. Distributed Switch: 6.0.0
- B. Distributed Switch: 5.0.0
- C. Distributed Switch: 5.1.0
- D. Distributed Switch: 5.5.0

Correct Answer: B

Section: (none)

Explanation

Explanation/Reference:

Explanation:

Option	Description
vSphere Distributed Switch Version: 4.0	Compatible with ESX/ESXi version 4.0 and later. Features released with later vSphere distributed switch versions are not supported.
vSphere Distributed Switch Version: 4.1.0	Compatible with ESX/ESXi version 4.1 and later. Features released with later vSphere distributed switch versions are not supported.
vSphere Distributed Switch Version: 5.0.0	Compatible with ESXi version 5.0 and later. Features released with later vSphere distributed switch versions are not supported.
vSphere Distributed Switch Version: 5.1.0	Compatible with ESXi version 5.1 and later.

Reference: <https://pubs.vmware.com/vsphere-51/index.jsp?topic=%2Fcom.vmware.vsphere.networking.doc%2FGUID-09176C71-1748-460B-BB7B3671AB855D7E.html>

QUESTION 12

An administrator needs to monitor traffic on vSwitches in a vSphere 6.x environment.

Which option, if configured, would accomplish this task?

- A. Forged Transmits
- B. MAC Address Changes
- C. Promiscuous Mode
- D. Notify Switches

Correct Answer: C

Section: (none)

Explanation

Explanation/Reference:

Explanation:

To monitor traffic via VMware Service Console (SC), a port group and a vswif interface with security settings modified to promiscuous mode accept is required for capturing.

Reference: https://kb.vmware.com/selfservice/microsites/search.do?language=en_US&cmd=displayKC&externalId=1000880

QUESTION 13

Which two actions allow for the disabling of Network Rollback operations? (Choose two.)

- A. Modifying the vpxd advanced configuration options and adding the config.vpxd.network.rollback key
- B. Modifying the C:\ProgramData\VMware\CIS\cfg\vmware-vpx\vpxd.cfg file and adjusting the <rollback> xml tag
- C. Modifying the C:\ProgramData\VMware\CIS\cfg\vmware-vpx\vpxd.cfg file and adjusting the <networkrollback> xml tag
- D. Modifying the C:\ProgramData\VMware\CIS\cfg\vmware-vpx\firstboot\vpxd-service-spec.prop file and adjusting the <rollback> xml tag

Correct Answer: AB

Section: (none)

Explanation

Explanation/Reference:

Explanation:

Modifying the vpxd advanced configuration options and adding the config.vpxd.network.rollback key. You can also modify the C:\ProgramData\VMware\CIS\cfg\vmware-vpx\vpxd.cfg file and adjusting the <rollback> xml tag

Reference: <https://pubs.vmware.com/vsphere-51/index.jsp?topic=%2Fcom.vmware.vsphere.networking.doc%2FGUID-C50DBAAC-89A7-4BF9-A7F870EAB37E53C7.html>

QUESTION 14

What are two ways to identify TCP/IP stack information? (Choose two.)

- A. Using the vSphere Web Client
- B. Using esxcli network ip netstack
- C. Using esxcfg-netstack
- D. Using the vSphere Client



Correct Answer: AB

Section: (none)

Explanation

Explanation/Reference:

Explanation:

Use vSphere web client or the command esxcli network ip netstack to identify TCP/IP stack info.

Reference: <https://virtualizationreview.com/articles/2015/10/26/configure-multiple-tcpip-stacks-in-vsphere-6.aspx>

QUESTION 15

Which two Fibre Channel zoning options are supported with vSphere 6.x? (Choose two.)

- A. Single-Initiator
- B. Single-Initiator-Single-Target

- C. Multiple-Initiators-Single-Target
- D. Multiple-Initiators-Multiple-Targets

Correct Answer: AB

Section: (none)

Explanation

Explanation/Reference:

Explanation:

Use single-initiator-single-target zoning when zoning ESXi hosts to Fibre Channel arrays. With this type of configuration, fabric related events that occur on one array do not impact other arrays

Reference: <https://pubs.vmware.com/vsphere-60/topic/com.vmware.ICbase/PDF/vsphere-esxi-vcenter-server-60-storage-guide.pdf>

QUESTION 16

Which two parameters are required when adding an iSCSI target to an iSCSI Software Adapter using Dynamic Discovery? (Choose two.)

- A. The iSCSI device's IP Address or Fully Qualified Domain Name
- B. The Port Number
- C. The iSCSI device's iSCSI Qualified Name (IQN)
- D. The Default Gateway IP Address



Correct Answer: AB

Section: (none)

Explanation

Explanation/Reference:

Explanation:

When adding an iSCSI target to an iSCSI software adapter using dynamic discovery, use iSCSI device IP address or FQDN. You can use port number to add iSCSI too.

Reference: https://pubs.vmware.com/vsphere-50/topic/com.vmware.vcli.examples.doc_50/cli_manage_iscsi_storage.7.5.html

QUESTION 17

What is true regarding datastores on ESXi 6.x?

- A. NFS 4.1 datastore does not support Fault Tolerance (FT)
- B. Both VMFS3 and VMFS5 datastores can be created
- C. NFS datastore can be mounted using NFS 4.1 on one ESXi host and NFS 3.0 on another
- D. NFS 3.0 datastore does not support Fault Tolerance (FT)

Correct Answer: A

Section: (none)

Explanation

Explanation/Reference:

Explanation:

VMs on NFS v4.1 support FT, as long as it is the new FT mechanism introduced in 6.0.

VMs running on NFS v4.1 do not support the old, legacy FT mechanism.

In vSphere 6.0, the newer Fault Tolerance mechanism can accommodate symmetric multiprocessor (SMP) virtual machines with up to four vCPUs. Earlier versions of vSphere used a different technology for Fault Tolerance (now known as legacy FT), with different requirements and characteristics (including a limitation of single vCPUs for legacy FT VMs).

Reference: <http://vsphere-land.com/news/nfs-4-1-support-in-vsphere-limitations-and-caveats.html>

QUESTION 18

Which type of Adapter does not require vmkernel networking?

- A. Independent Hardware iSCSI Adapter
- B. Dependent Hardware iSCSI Adapter
- C. Software iSCSI Adapter
- D. Software FCoE Adapter



Correct Answer: A

Section: (none)

Explanation

Explanation/Reference:

Explanation:

Independent Hardware iSCSI adapter does not require vmkernel networking.

Reference: <https://pubs.vmware.com/vsphere-55/index.jsp?topic=%2Fcom.vmware.vsphere.storage.doc%2FGUID-C476065E-C02F-47FA-A5F73B3F2FD40EA8.html>

QUESTION 19

What are two benefits of using NFS 4.1 with vSphere 6.x as compared to NFS 3? (Choose two.)

- A. NFS 4.1 supports Kerberos Authentication



<https://vceplus.com/>

- B. NFS 4.1 supports multipathing
- C. NFS 4.1 supports IPv6
- D. NFS 4.1 supports hardware acceleration

Correct Answer: AB

Section: (none)

Explanation

Explanation/Reference:

Explanation:

NFs 4.1 support kerberos authentication and multipathing.

Reference: <http://searchvmware.techtarget.com/answer/What-are-the-implications-of-NFS-41-in-vSphere-6>



QUESTION 20

Which two storage controller configurations can be used with Virtual SAN? (Choose two.)

- A. SAS controllers in Passthrough mode
- B. SAS controllers in RAID0 mode
- C. SAS controllers in RAID1 mode
- D. SAS controllers in RAID10 mode

Correct Answer: AB

Section: (none)

Explanation

Explanation/Reference:

Explanation:

SAS controllers in passthrough mode and in RAID 0 mode can be used with virtual SAN.

Reference: <http://blogs.vmware.com/vsphere/2014/01/virtual-san-hardware-guidance-part-ii-storage-controllers.html>

QUESTION 21

A company has decided to implement Virtual SAN within their vSphere 6.x environment. The Virtual SAN cluster will be composed of three ESXi 6.x hosts that are on the Virtual SAN Ready Node list.

Each ESXi host includes:

- Two SAS Controllers that support Passthrough Mode
- Four Solid State Drives (SSDs) 1TB in size each
- 20 SAS Magnetic Disks (MDs) 1TB in size each
- The SSDs and MDs are evenly split between the two SAS controllers

The company will pilot a Virtual SAN cluster utilizing VMware best practices while maximizing storage capacity. The Virtual SAN cluster will use Manual Mode.

Which two Disk Group configurations would meet the stated configuration requirements? (Choose two.)

- A. 4 disk groups with 1 SSD and 5 MDs each
- B. 2 disk groups with 1 SSD and 7 MDs each
- C. 2 disk groups with 2 SSDs and 7 MDs each
- D. 2 disk groups with 1 SSD and 10 MDs each



Correct Answer: AB

Section: (none)

Explanation

Explanation/Reference:

Explanation:

4 disk groups with 1 SSD and 5 Mds each and 2 disk groups with 1 SSD and 7 Mds each can meet the configuration requirements in the scenario.

Reference: <https://pubs.vmware.com/vsphere-60/topic/com.vmware.ICbase/PDF/virtual-san-60-administration-guide.pdf>

QUESTION 22

An administrator is creating a new Virtual SAN cluster on a Layer 2 network. There is an existing Virtual SAN cluster on the same Layer 2 network.

Which two actions would allow the new Virtual SAN cluster to coexist with the older cluster? (Choose two.)

- A. Change the default Multicast Address on the new Virtual SAN cluster.
- B. Change the default Unicast Address on the new Virtual SAN Cluster.

- C. Create a separate VLAN for each cluster.
- D. Create an ARP Alias for the Virtual SAN VMkernel Network Adapter.

Correct Answer: AB

Section: (none)

Explanation

Explanation/Reference:

Explanation:

To configure virtual san cluster to coexist with older cluster, you need to change the default multicast address on the netw virtual san cluster and change the default unicast address on the new virtual san cluster.

Reference: <https://pubs.vmware.com/vsphere-55/index.jsp?topic=%2Fcom.vmware.vsphere.storage.doc%2FGUID-5656EA30-F7C7-494C-A356E1471942625A.html>

QUESTION 23

Which two Virtual SAN related actions might start resynchronization of virtual machine objects? (Choose two.)

- A. Editing a virtual machine storage policy to increase the number of replicas.
- B. Editing a virtual machine storage policy to reduce the number of replicas.
- C. Editing a virtual machine storage policy to increase the number of disk stripes.
- D. Editing a virtual machine storage policy to reduce the number of disk stripes.

Correct Answer: AC

Section: (none)

Explanation

Explanation/Reference:

Explanation:

Editing a virtual machine storage policy to increase the number of replicas and the number of disk stripes with start resync of virtual machine objects.

Reference: <https://www.vmware.com/support/vsphere6/doc/vmware-virtual-san-60-release-notes.html>

QUESTION 24

Which two statements are true about VMFS5 datastores on ESXi 6.x? (Choose two.)

- A. Virtual Disk (VMDK) size can be larger than 2TB.
- B. Datastore extent size can be larger than 2TB.
- C. Only Physical Mode Raw Device Map (Passthrough-RDM) can be larger than 2TB.
- D. 2MB block size is required to support larger than 2TB file size.

Correct Answer: AB

Section: (none)

Explanation

Explanation/Reference:

Explanation:

The maximum supported size of a virtual mode Raw Device Mapping (vRDM) has also been increased from 2 TB to 62 TB.

A VMDK larger than 2 TB can be created on a virtual machine that is powered on or off, but extending a VMDK beyond 2 TB is only supported when the virtual machine is powered off.

Reference: https://kb.vmware.com/selfservice/microsites/search.do?language=en_US&cmd=displayKC&externalId=2058287

QUESTION 25

Which three conditions would prevent Storage I/O Control from being enabled on a group of datastores? (Choose three.)

- A. The datastores planned for the solution are used by different vSphere clusters.
- B. A datastore planned for the solution is configured as a Raw Device Mapping file.
- C. A datastore planned for the solution has three extents.
- D. A datastore planned for the solution is configured as NFS.
- E. The organization has an Enterprise license.



Correct Answer: BCE

Section: (none)

Explanation

Explanation/Reference:

Explanation:

Datastore planned for solution is configured as RDM file. When the datastore has three extents and the organization has an enterprise license, storage I/O control will not be enabled on a group of datastores.

Reference: https://kb.vmware.com/selfservice/microsites/search.do?language=en_US&cmd=displayKC&externalId=1022091

QUESTION 26

When is it possible to place a VMFS5 datastore in maintenance mode?

- A. When it is a member of a Storage DRS cluster
- B. When it is a member of Virtual SAN cluster
- C. When it is a member of a multi-extent datastore
- D. When it is a member of a Virtual Volume

Correct Answer: A

Section: (none)

Explanation

Explanation/Reference:

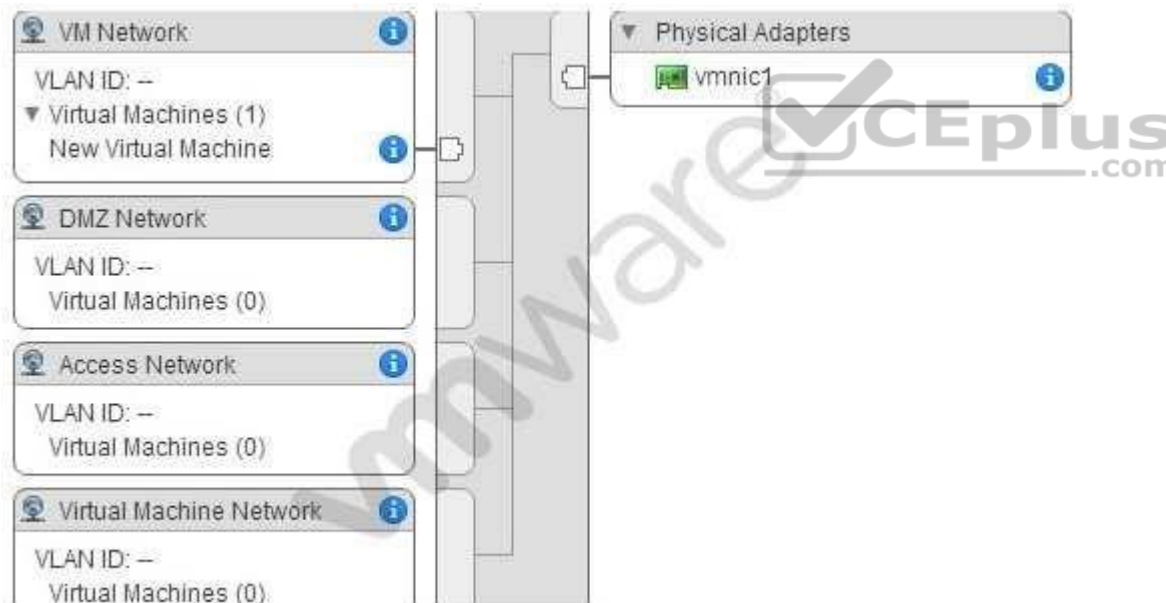
Explanation:

Storage DRS introduced the feature Datastore Maintenance mode and this new feature can be compared to Host Maintenance Mode. When a datastore is placed in Maintenance Mode all registered virtual machines on that datastore, are migrated to the other datastores in the datastore cluster. Datastore maintenance mode can be used to safely migrate virtual machines out of the datastore for storage array related maintenance operations such as migrating a LUN to another RAID group, however it is also an excellent feature that can help you during a storage migration project migrating virtual machines from standalone VMFS3 datastores to VMFS5 datastores aggregated in a Storage DRS datastore cluster.

Reference: <https://blogs.vmware.com/vsphere/2012/04/using-datastore-maintenance-mode-for-migration-virtual-machines-to-datastore-clusters.html>

QUESTION 27

Refer to the Exhibit.



A vSphere 6.x Standard Switch is configured with 4 virtual machine portgroups, as shown in the exhibit.

Which portgroup would be utilized by default when creating a new virtual machine?

- A. Access Network
- B. DMZ Network
- C. VM Network
- D. Virtual Machine Network

Correct Answer: A

Section: (none)

Explanation

Explanation/Reference:

Explanation:

Access network will be utilized by default when creating a new virtual machine as can be seen in the exhibit.

Reference:

QUESTION 28

You are creating a virtual machine in the Web Client using the New Virtual Machine wizard.

Which two steps are required? (Choose two.)

- A. Select a valid name.
- B. Select a cluster for the compute resource.
- C. Select a network adapter.
- D. Select the virtual machine compatibility.



Correct Answer: AD

Section: (none)

Explanation

Explanation/Reference:

Explanation:

When you create a virtual machine, you provide a unique name for it. The unique name distinguishes it from existing virtual machines in the virtual machine folder or datacenter. The name can contain up to 80 characters. You can select a datacenter or folder location for the virtual machine, depending on your organizational needs.

You can accept the default ESXi host version for this virtual machine or select a different version, depending on the hosts in your environment.

Reference: https://pubs.vmware.com/vsphere-51/index.jsp?topic=%2Fcom.vmware.vsphere.vm_admin.doc%2FGUID-AE8AFBF1-75D1-4172-988C378C35C9FAF2.html

QUESTION 29

From which two locations in the inventory hierarchy can you deploy a virtual machine using a template? (Choose two.)

- A. Directly from the template.
- B. From a compute resource.
- C. From an existing virtual machine.
- D. From a Datastore.

Correct Answer: AB

Section: (none)

Explanation

Explanation/Reference:

Explanation:

You can deploy a virtual machine directly from the template. A compute resource can also be used for deploying a VM.

Reference: <https://pubs.vmware.com/vsphere-60/topic/com.vmware.ICbase/PDF/vsphere-esxi-vcenter-server-60-virtual-machine-admin-guide.pdf>

QUESTION 30

An administrator is deploying multiple Windows 2003 Virtual Machines from the same template.

What two steps should be taken to avoid network conflicts? (Choose two.)

- A. Customize the guest operating system.
- B. Install VMware Tools into the new virtual machines.
- C. Copy the Microsoft Sysprep tools onto the vCenter Server system.
- D. Ensure the e1000 vmnic is selected for each new virtual machine.

Correct Answer: AC

Section: (none)

Explanation

Explanation/Reference:

Explanation:

To avoid such network or software conflicts, its recommended to customize the VM Guest during the deployment process. For Guest OS customization of virtual machines deployed from templates, vCenter requires the following:

- If the guest OS is Windows, you need VMware Tools and Sysprep utils to be installed within the templates:
- You will need to copy Sysprep tools to vCenter for Windows 2000, XP & 2003. Starting with Windows Vista onward, Sysprep tools are part of the base OS install.

Reference: <https://virtual-drive.in/2015/02/08/what-are-virtual-machine-templates/>

QUESTION 31

An ESXi 6.x host consists of 24 logical cores. Hyperthreading is enabled on the host.

What is the maximum number of vCPUs that can be assigned to a virtual machine on this host?



<https://vceplus.com/>

- A. 24
- B. 48
- C. 64
- D. 128



Correct Answer: A

Section: (none)

Explanation

Explanation/Reference:

Explanation:

A total of 24 vCPUs can be assigned to a virtual machine if hyperthreading is enabled.

Reference: <http://wahlnetwork.com/2013/09/30/hyper-threading-gotcha-virtual-machine-vcpu-sizing/>

QUESTION 32

An administrator has an application that requires connection directly to PCI devices through a virtual machine.

What is a limitation of this configuration?

- A. Devices must be reserved for PCI passthrough on at least one host on which the virtual machine will run.
- B. Snapshots are not supported with DirectPath I/O devices.

- C. A maximum of 18 PCI DirectPath I/O devices can be added to a virtual machine.
- D. Only one PCI controller can be presented to the virtual machine.

Correct Answer: B

Section: (none)

Explanation

Explanation/Reference:

Explanation:

Snapshots are not supported with PCI vSphere Direct Path I/O devices.

Reference: https://pubs.vmware.com/vsphere-51/index.jsp?topic=%2Fcom.vmware.vsphere.vm_admin.doc%2FGUID-058AEDF0-117E-4E17-956D37181E22D499.html

QUESTION 33

Which method provides the best performance for the lowest resource cost when building a virtual machine for a single-threaded Windows application?

- A. Deploy single-threaded applications on uniprocessor virtual machines.
- B. Deploy single-threaded applications on symmetric multi-processor virtual machines.
- C. Tune single-threaded applications to take advantage of symmetric multi-processor resources.
- D. Tune Single-threaded applications at the hypervisor level.

Correct Answer: A

Section: (none)

Explanation

Explanation/Reference:

Explanation:

Virtual processors are not supported. You have to deploy single threaded applications on uniprocessor virtual machines.

Reference: <http://support.theenterprisecloud.com/kb/default.asp?id=343>

QUESTION 34

An administrator needs to add an object to an existing vApp using the vSphere Web Client. How is this accomplished?

- A. Create an Object Inside the vApp.
- B. Add an Object to a vApp.
- C. Add an Object to the Datastore the vApp is located in.
- D. Move all Objects to a new Datastore folder.

Correct Answer: AB

Section: (none)

Explanation

Explanation/Reference:

Explanation:

to add an object to an existing vApp using the vsphere web client, create an object inside vApp or you can add an object to a vApp.

Reference: https://pubs.vmware.com/vsphere-50/index.jsp?topic=%2Fcom.vmware.vsphere.vm_admin.doc_50%2FGUID-12FDA1A4-6214-463B-8D73FE25454C642E.html

QUESTION 35

A virtual machine template is accidentally removed from the vCenter Server Inventory.

Which method would be used to recover the template back into the environment?

- A. Use the datastore browser to locate the template, then right click and add the .vmtx file to inventory.
- B. Use the datastore browser to locate the template, then right click and add the .vmx file to inventory.
- C. Using the Managed Object Browser and adding the template from the ManagedObjectReference:GuestFileManager object.
- D. Using the Managed Object Browser and adding the template from the ManagedObjectReference:VirtualDiskManager object.

Correct Answer: A

Section: (none)

Explanation

Explanation/Reference:

Explanation:

Templates are associated with hosts, and the only way to regain or register templates after removing and adding a host is to use the datastore browser to locate the template. Then use the inventory wizard to name and register the .vmtx file as a template back into vCenter Server.

Reference: https://pubs.vmware.com/vsphere-4-esx-vcenter/index.jsp?topic=/com.vmware.vsphere.bsa.doc_40/vc_admin_guide/working_with_templates_and_clones/t_regain_templates.html

QUESTION 36

A vApp named Sales has a Memory Limit of 32 GB and a CPU Limit of 12,000 MHz. There are three virtual machines within the vApp: ▪ Sales-DB -- Has a memory reservation of 20 GB.

- Sales-DC -- Has a memory reservation of 8 GB.
- Sales-Web -- Has a memory reservation of 8 GB.

Which statement is correct?

- A. All three virtual machines can power on, but will have memory contention.

- B. All three virtual machines can power on without memory contention.
- C. Only two of the three virtual machines can power on.
- D. Only one of the virtual machines can power on.

Correct Answer: C

Section: (none)

Explanation

Explanation/Reference:

Explanation:

As per the scenario, only two of the three virtual machines can power on.

QUESTION 37

An administrator is cloning and configuring five new web server virtual machines.

What would be the benefit of configuring resource shares for the new VMs?

- A. To prioritize access to a resource during contention.
- B. To guarantee access to a resource during contention.
- C. To prioritize access to a resource before contention occurs.
- D. To guarantee access to a resource before contention occurs.



Correct Answer: A

Section: (none)

Explanation

Explanation/Reference:

Explanation:

Configuring resource shares for the new Vms can prioritize access to a resource during contention

Reference: <http://www.settlersoman.com/vmware-vsphere-basics-understanding-resource-pools/>

QUESTION 38

An administrator is virtualizing a physical application server and adding it to an existing multi-tiered vApp. The application license is currently tied to the physical NIC's MAC address, so the administrator needs to ensure the license will function properly in the virtual machine.

Which two actions can the administrator take to satisfy this task? (Choose two.)

- A. Set the MAC address for the vNIC in the guest operating system.

- B. Install the physical server's NIC into the ESXi host.
- C. Configure the MAC address for the vNIC using the vSphere Web Client.
- D. Assign the physical server NIC's MAC address in the vSphere Distributed Switch.

Correct Answer: AB

Section: (none)

Explanation

Explanation/Reference:

Explanation:

First set the MAC address for the vNIC in the guest operating system and install the physical server's NIC into the ESXi host.

Reference: <http://rickardandersson.com/manual-mac-address-for-a-vmware-guest>

QUESTION 39

A virtual machine has been renamed and an administrator is unable to find files with the new virtual machine name in the datastore.

What is the reason for this?



<https://vceplus.com/>

- A. The names of the files on the datastore do not change.
- B. The names of the files on the datastore have been corrupted.
- C. The virtual machine needs to be re-added to the inventory.
- D. The Distributed Resource Scheduler moved the virtual machine to another host.

Correct Answer: A

Section: (none)

Explanation

Explanation/Reference:

Explanation:

The reason is that the names of the files on the datastore do not change that is why admin is unable to find files with new virtual machines name in the datastore.

Reference: https://kb.vmware.com/selfservice/microsites/search.do?language=en_US&cmd=displayKC&externalId=1029513

QUESTION 40

What is required when changing a virtual machine name using the vSphere Web Client?

- A. Verify connectivity to the ESXi host where the virtual machine is running and its inventory list is accessible.
- B. Verify in which datastore the virtual machine resides and that you have access and its inventory list is accessible.
- C. Verify that virtual machine files are stored in the same datastore and can be accessed in the datastore browser list.
- D. Verify the virtual machine is not running in Fault Tolerant mode and that it is not in a Distributed Resource Scheduler cluster.

Correct Answer: A

Section: (none)

Explanation

Explanation/Reference:

Explanation:

Before changing the name, verify connectivity to ESXi host where the virtual machine resides and that its inventory list is accessible.

Reference: https://kb.vmware.com/selfservice/microsites/search.do?language=en_US&cmd=displayKC&externalId=1003742

QUESTION 41

Which two options would allow a database administrator, with no access to the vSphere infrastructure, to connect to a virtual machine? (Choose two.)

- A. Use the Virtual Machine Remote Console (VMRC).
- B. Use Remote Desktop Protocol (RDP) to connect.
- C. Ask the vSphere administrator to grant permission to access the console through vCenter Server.
- D. Ask the vSphere administrator to grant permission to access with the Horizon View Direct Connect Client.

Correct Answer: BC

Section: (none)

Explanation

Explanation/Reference:

Explanation:

Accessing a virtual machine with no access to vSphere environment is tricky. You can use virtual machine remote console to remotely access the VM by asking the admin to grant permission to access the console through vcenter server.

Reference: <http://blog.mwpreston.net/2011/11/25/access-to-vm-console-without-vi-client/>

QUESTION 42

An administrator has a virtual machine that requires four times the compute resources than other virtual machines on the same ESXi 6.x host.

How should the administrator configure the virtual machine settings, in order to be prepared for any resource contention?

- A. Set the shares of the priority virtual machine to High and the rest to Low.
- B. Set the shares of the priority virtual machine to High.
- C. Set the shares of the priority virtual machine to High and the rest to Normal.
- D. Set the shares of the priority virtual machine to Normal and the rest to Low.

Correct Answer: A

Section: (none)

Explanation

Explanation/Reference:

Explanation:

For the virtual machine that requires more resources, you can set the shares of the priority VM to high and set the rest to medium or low.

Reference: http://www.globalknowledge.net/mea-shared-content/documents/645372/645389/WP_VM_Resource_Pools.pdf (page 3)

QUESTION 43

A vApp is running out of compute resources when overall activity is high within the resource pool. At other times, everything is fine.

What should be done to resolve this issue?

- A. Increase the size of the resource pool Shares.
- B. Set the vApp's CPU and Memory Reservation Type to Expandable.
- C. Set the vApp's CPU and Memory Limit to Unlimited.
- D. Create a new resource pool with the existing hardware configuration.

Correct Answer: B

Section: (none)

Explanation

Explanation/Reference:

Explanation:

For the problem, set the vApp CPU and memory reservation type to expandable.

Reference: https://pubs.vmware.com/vsphere-50/index.jsp?topic=%2Fcom.vmware.vsphere.vm_admin.doc_50%2FGUID-9902FD4C-4727-43F7-AEAF901DA4CB4D60.html

QUESTION 44

An administrator wants to deploy a vApp and dynamically assign IP addresses without a DHCP server on the network.

Which action would you take to accomplish this task?

- A. Enable IP pools.
- B. Configure a local DHCP server in the vApp.
- C. Enable NAT on the vApp router.
- D. Configure the guest OS for workgroup and WINS.

Correct Answer: A

Section: (none)

Explanation

Explanation/Reference:

Explanation:

IP pools were first introduced with vSphere 4, but they're not necessarily used by everyone. IP pools are necessary if you want create or deploy a vApp. They provide a network identity to vApps. IP pool gives a network config to VMs that run in the vApp. So you'll also need to have an IP pool configured if you want to test vCloud Automation Center (VCAC) or Horizon Workspace.

When you configure an IP Pool you specify a range of either IPv4 or IPv6 addresses, DNS and proxy settings, and select which vSwitch port groups that the pool will be available to. Usually you'll want to do a static IP for server VMs, but you might want to have a test VLAN for developments and you need DHCP there.

Reference: <http://www.vladan.fr/configuring-ip-pools/>

QUESTION 45

A vApp template recently added to a Content Library is not displayed.

Which two actions could correct this problem? (Choose two.)

- A. Manually synchronize the library
- B. Select the Download all library content immediately option
- C. Select the Sync subscribed library option
- D. Manually download the vApp template

Correct Answer: AB

Section: (none)

Explanation

Explanation/Reference:

Explanation:

If the vApp template is not displayed in the content library, select the download all library content immediately option and manually synchronize the library.

Reference: https://pubs.vmware.com/vsphere-60/index.jsp?topic=%2Fcom.vmware.vsphere.vm_admin.doc%2FGUID-F7BF0E6B-7C4F-4E46-8BBF76229AEA7220.html

QUESTION 46

When you add an ESXi 6.x host to a new Cluster, which vSphere object owns the CPU and Memory resources of the hosts?

- A. vCenter Server
- B. Datacenter
- C. Cluster
- D. Host

Correct Answer: C

Section: (none)

Explanation

Explanation/Reference:

Explanation:

Cluster owns the CPU and memory resources of the hosts when you add an ESXi 6.x host to a new cluster.

Reference: <https://pubs.vmware.com/vsphere-60/topic/com.vmware.ICbase/PDF/vsphere-esxi-vcenter-server-60-resource-management-guide.pdf>

QUESTION 47

An administrator creates a DRS cluster of eight ESXi 6.x hosts. There are 10 virtual machines balanced across the hosts. An attempt to place the first host into maintenance mode fails.

What are two reasons that the host failed to enter maintenance mode? (Choose two.)

- A. The DRS cluster Automation Level is set to Partially Automated mode.
- B. One of the virtual machines on the ESXi Host entering maintenance mode is configured with a DRS Host affinity rule Should run on hosts in group.
- C. One of the virtual machines on the ESXi Host entering maintenance mode is configured with a DRS Host affinity rule Must run on hosts in group.
- D. One of the virtual machines on the ESXi Host entering maintenance mode is configured with an individual Automation Level set to Partially Automated.

Correct Answer: AD

Section: (none)

Explanation

Explanation/Reference:

Explanation:

When considering an automation level, it is usually best to choose Fully Automated and let DRS handle everything. However, when first enabling DRS, you might want to set the automation level to Manual or Partially Automated so that you can observe its recommendations for a while before turning it loose on Fully Automated. Even when selecting Fully Automated, you can still configure individual VM automation levels, so you can specify certain VMs to not be migrated at all (disabled) or to be set to Manual or Partially Automated. To configure individual VM automation levels, click on Virtual Machine Options, located under DRS. Usually, the default three-star level is a good starting point and works well for most environments. You should be careful when choosing more aggressive levels, as you could have VMs moving very frequently between hosts (i.e., VM pong), which can create performance issues because of the constant VMotions which cause an entire LUN to be locked during the operation (i.e., SCSI reservations).

Reference: <http://cdn.ttgtmedia.com/searchSystemsChannel/downloads/AdvancedvSpherefeatures.pdf>

QUESTION 48

Which two statements are correct when turning off a Distributed Resource Scheduler (DRS) Cluster? (Choose two.)

- A. The resource pool hierarchy of the DRS cluster is maintained.
- B. The resource pool hierarchy of the DRS cluster is removed.
- C. The affinity settings of the DRS cluster are removed and not maintained when DRS is re-enabled.
- D. The affinity settings of the DRS cluster are maintained when DRS is re-enabled.

Correct Answer: BC

Section: (none)

Explanation

Explanation/Reference:

Explanation:

When DRS is disabled, the cluster's resource pool hierarchy and affinity rules are not reestablished when DRS is turned back on. So if you disable DRS, the resource pools are removed from the cluster.

Reference: <http://www.vladan.fr/vcp6-dcv-objective-9-2-configure-advanced-vsphere-drs-features/>

QUESTION 49

An administrator enables High Availability (HA) on a Virtual SAN cluster.

Which network is used for HA Network Heartbeat configuration?

- A. The Management network.
- B. The vMotion network.
- C. The Virtual SAN network.
- D. The Provisioning Traffic network.

Correct Answer: C

Section: (none)

Explanation

Explanation/Reference:

Explanation:

Virtual SAN network is used for HA Network heart beat configuration.

Reference: <https://pubs.vmware.com/vsphere-55/index.jsp?topic=%2Fcom.vmware.vsphere.storage.doc%2FGUID-D68890D8-841A-4BD1-ACA1DA3D25B6A37A.html>

QUESTION 50

What are three goals of resource management within a cluster? (Choose three.)

- A. To prevent virtual machines from monopolizing resources and to guarantee predictable service rates.
- B. To exploit undercommitted resources and overcommit with graceful degradation.
- C. To provide solutions to potential problems that you might encounter when using vCenter Server.
- D. To control the relative importance of virtual machines and provide flexible dynamic partitioning.
- E. To provide additional network administration capabilities.

Correct Answer: ABD

Section: (none)

Explanation

Explanation/Reference:

Explanation:

When managing your resources, you should be aware of what your goals are.

In addition to resolving resource overcommitment, resource management can help you accomplish the following:

- Performance Isolation—prevent virtual machines from monopolizing resources and guarantee predictable service rates.
- Efficient Utilization—exploit undercommitted resources and overcommit with graceful degradation.
- Easy Administration—control the relative importance of virtual machines, provide flexible dynamic partitioning, and meet absolute service-level agreements.

Reference: <https://pubs.vmware.com/vsphere-60/topic/com.vmware.ICbase/PDF/vsphere-esxi-vcenter-server-60-resource-management-guide.pdf>

QUESTION 51

Which three features can be enabled for a new host cluster? (Choose three.)

- A. Storage Distributed Resource Scheduling
- B. High Availability



- C. Fault Tolerance
- D. Distributed Resource Scheduling
- E. Virtual SAN

Correct Answer: BDE

Section: (none)

Explanation

Explanation/Reference:

Explanation:

On a nw host cluster, high availability, distributed resource scheduling and virtual SAN can be enabled.

Reference: <https://pubs.vmware.com/vsphere-55/topic/com.vmware.vsphere.storage.doc/GUID-D68890D8-841A-4BD1-ACA1-DA3D25B6A37A.html>

QUESTION 52

An organization has an ESXi 6.x host that contains two resource pools. The host is being relocated to a DRS cluster.

What two actions can be taken to integrate the host into the cluster, and what would happen to the existing ESXi resource pool hierarchy as a result? (Choose two.)

- A. Place all of the host's virtual machines into the DRS cluster root resource pool. The resource pools present on the host will be deleted.
- B. Create a resource pool for the ESXi host's virtual machines and resource pools. The resource pools present on the host will be deleted.
- C. Place all of the host's virtual machines into the DRS cluster root resource pool. The resource pools present on the host will be preserved.
- D. Create a resource pool for the ESXi host's virtual machines and resource pools. The resource pools present on the host will be preserved.



<https://vceplus.com/>

Correct Answer: AD

Section: (none)

Explanation

Explanation/Reference:

Explanation:

First, place all of the host's virtual machines into DRS cluster root resources pool. The resource pool present on the host will be deleted. Create a resource pool for the ESXi host's virtual machines and resource pools. It will be preserved. Reference: <https://communities.vmware.com/thread/473862?start=0&tstart=0>

QUESTION 53

Which two events happen when Distributed Resource Scheduler (DRS) is disabled? (Choose two.)

- A. The cluster's resource pool heirarchy and affinity rules are re-established when DRS is turned back on.
- B. The cluster's resource pool hierarchy and affinity rules are not re-established when DRS is turned back on.
- C. The cluster's resource pools are removed from the cluster.
- D. The cluster's resource pools are removed from the cluster and assigned to the hosts.

Correct Answer: BC

Section: (none)

Explanation

Explanation/Reference:

Explanation:

When DRS is disabled, the cluster's resource pool hierarchy and affinity rules are not reestablished when DRS is turned back on. If you disable DRS, the resource pools are removed from the cluster. To avoid losing the resource pools, save a snapshot of the resource pool tree on your local machine. You can use the snapshot to restore the resource pool when you enable DRS.

Reference: <https://pubs.vmware.com/vsphere-51/index.jsp?topic=%2Fcom.vmware.vsphere.resmgmt.doc%2FGUID-2117087C-7418-4698-8CCFBDF361664A3A.html>

QUESTION 54

A High Availability (HA) cluster is configured to respond to a given number of host failures. The cluster contains virtual machines configured with these settings: ▪

- VM1 has a 1GHz CPU reservation and no Memory reservation
- VM2 has a 2GHz CPU reservation and no Memory reservation ▪
- VM3 has no CPU reservation and no Memory reservation

Given this information, what is the correct slot size for the cluster?

- A. The CPU Reservation should be set to 32MHz and the memory reservation should be set to 32MB plus memory overhead.
- B. The CPU reservation should be set to 1 GHz and the memory reservation should be set to 0MB plus memory overhead.
- C. The CPU reservation should be set to 2 GHz, and the memory reservation should be set to 0MB plus the virtual machine memory overhead.
- D. The CPU reservation should be set to 2 GHz, and the memory reservation should be set to 32MB, plus the virtual machine memory overhead.

Correct Answer: C

Section: (none)

Explanation

Explanation/Reference:

Explanation:

Then HA will calculate how much resources are currently reserved for both memory and CPU for powered-on virtual machines. For CPU, those virtual machines that do not have a reservation larger than 32Mhz a default of 32Mhz will be used. For memory a default of 0MB+memory overhead will be used if there is no reservation set. If a reservation is set for memory it will use the reservation+memory overhead. Reference: <http://www.yellow-bricks.com/2012/06/20/ha-admission-control-basics-part-22/>

QUESTION 55

Which two High Availability (HA) Cluster admission control policies can help avoid resource fragmentation? (Choose two.)

- A. Define failover capacity by static number of hosts
- B. Define failover capacity by reserving a percentage of the cluster resources
- C. Use dedicated failover hosts
- D. Use Virtual Machine Monitoring

Correct Answer: AC

Section: (none)

Explanation

Explanation/Reference:

Explanation:

To avoid resource fragmentation, define failover capacity by static number of hosts and use dedicated failover hosts.

Reference: <https://pubs.vmware.com/vsphere-51/index.jsp?topic=%2Fcom.vmware.vsphere.avail.doc%2FGUID-C4059DB9-D673-45CB-918C68C87FEB060A.html>

QUESTION 56

What is a requirement when enabling a Virtual SAN cluster in an existing High Availability (HA) and Distributed Resource Scheduler (DRS) Cluster?

- A. Disable DRS and HA before enabling Virtual SAN
- B. Enable DRS before enabling Virtual SAN
- C. Disable HA before enabling Virtual SAN
- D. Enable Storage DRS before enabling Virtual SAN

Correct Answer: C



Section: (none)

Explanation

Explanation/Reference:

Explanation:

One of the requirement is to disable HA before enabling Virtual SAN.

Reference: <https://pubs.vmware.com/vsphere-60/topic/com.vmware.ICbase/PDF/virtual-san-60-administration-guide.pdf>

QUESTION 57

What must be enabled to ensure that VM Component Protection (VMCP) works in a High Availability cluster?

- A. VMware Tools Virtual Machine Communication Interface (VMCI)
- B. Fault Tolerance
- C. Atomic Test and Set (ATS)
- D. All Paths Down (APD) Timeout

Correct Answer: D

Section: (none)

Explanation

Explanation/Reference:

Explanation:

There are two types of datastore accessibility failure:

PDL (Permanent Device Loss) is an unrecoverable loss of accessibility that occurs when a storage device reports the datastore is no longer accessible by the host. This condition cannot be reverted without powering off virtual machines.

APD (All Paths Down) represents a transient or unknown accessibility loss or any other unidentified delay in I/O processing. This type of accessibility issue is recoverable.

Reference: <https://pubs.vmware.com/vsphere-60/index.jsp?topic=%2Fcom.vmware.vsphere.avail.doc%2FGUID-F01F7EB8-FF9D-45E2-A093-5F56A788D027.html>

QUESTION 58

An organization has a number of virtual machines that would benefit from Fault Tolerance. These include:

- A single vCPU Apache Server
- A dual vCPU vCenter Server
- A quad vCPU SQL Server
- An eight vCPU Hadoop Server

Which two virtual machines can be configured to use VMware Fault Tolerance? (Choose two.)

- A. Apache Server



- B. vCenter Server
- C. SQL Server
- D. Hadoop Server

Correct Answer: AC

Section: (none)

Explanation

Explanation/Reference:

Explanation:

Apache server and SQL server can be configured to use VMware fault tolerance.

Reference: https://kb.vmware.com/selfservice/microsites/search.do?language=en_US&cmd=displayKC&externalId=1013428

QUESTION 59

Which three statements are true regarding Fault Tolerance? (Choose three.)

- A. Applications need to be continuously available to users.
- B. Applications without native clustering capabilities can be protected.
- C. Custom clustering solutions are complicated to configure and maintain.
- D. Applications that have 16 vCPUs are supported.
- E. Prevents application crashes by analyzing the workload and correcting problems.

Correct Answer: ABC

Section: (none)

Explanation

Explanation/Reference:

Explanation:

With Fault tolerance, applications need to be continuously available to users, application without native clustering capabilities can be protected and custom clustering solutions are complicated to configure and maintain.

Reference: <https://www.vmware.com/products/vsphere/features/availability>

QUESTION 60

An administrator is tasked with performing a vMotion migration of a virtual machine. The virtual machine is configured as follows:

- vSphere Flash Read Cache (vFRC) enabled
- Is part of a Distributed Resource Cluster (DRS) Cluster

Which two statements are true? (Choose two.)

- A. Each ESXi host in the cluster supports multiple virtual flash resources.
- B. Each ESXi host in the cluster supports one virtual flash resource.
- C. DRS treats powered-on virtual machines with Flash Read Cache as having a preferred affinity to their current host and moves them only for mandatory reasons.
- D. DRS treats powered-on virtual machines with Flash Read Cache as having a required affinity to their current host and does not move them.

Correct Answer: BC

Section: (none)

Explanation

Explanation/Reference:

Explanation:

Each ESXi host in the cluster supports one virtual flash resource. Secondly, DRS treats powered-on virtual machines with Flash Read Cache as having a preferred affinity to the current host.

Reference: <http://www.yellow-bricks.com/2013/09/11/frequently-asked-questions-vsphere-flash-read-cache/>

QUESTION 61

Which two actions are required when enabling vFlash Read Cache for a virtual machine's virtual disk? (Choose two.)

- A. A value in the Virtual Flash Read Cache text box must be entered.
- B. A Flash Resource Pool for Cache size reservation must be entered.
- C. The Device backing and the block size must be configured.
- D. The Enable virtual flash host swap cache check box must be selected.

Correct Answer: AD

Section: (none)

Explanation

Explanation/Reference:

Explanation:

To enable vFlash Read cache for VM virtual disk, enter a value in virtual flash read cache text box and enable virtual flash host swap cache check box.

Reference: <http://www.yellow-bricks.com/2013/08/26/introduction-to-vsphere-flash-read-cache-aka-vflash/>

QUESTION 62

vMotion can be performed between which three physical boundaries? (Choose three.)

- A. Between two vCenter Server Systems
- B. Between two vSphere Distributed Virtual Switches

- C. Between two vCenter Server Datacenter objects
- D. Between two VMware NSX Layer 4 segments
- E. Between two NFS datastores

Correct Answer: ABC

Section: (none)

Explanation

Explanation/Reference:

Explanation:

vMotion can be performed between two vCenter servers, two vsphere distributed virtual swiches and between two vcenter server datacenter objects.

Reference: <https://www.vmware.com/products/vsphere/features/vmotion>

QUESTION 63

Which three operations occur during a cold migration of a virtual machine? (Choose three.)

- A. The virtual machine disks are moved if the datastore is being changed.
- B. The virtual machine is registered with the destination server.
- C. The source virtual machine is removed from the old hosts.
- D. The virtual machine hardware is upgraded.
- E. The virtual machine files are quiesced prior to the migration.



Correct Answer: ABC

Section: (none)

Explanation

Explanation/Reference:

Explanation:

First, the virtual machine disks are moved if the datastore is being changed, the virtual machine is registered with the destination server and the source virtual machine is removed from the old host/s.

Reference: https://kb.vmware.com/selfservice/microsites/search.do?language=en_US&cmd=displayKC&externalId=1010045

QUESTION 64

An administrator needs to verify that vMotion operations can be performed in a vSphere data center.

What round trip time (RTT) latency is the maximum value that will allow vMotion operations to succeed?

- A. 50ms RTT
- B. 100ms RTT

C. 150ms RTT



<https://vceplus.com/>

D. 200ms RTT

Correct Answer: C

Section: (none)

Explanation

Explanation/Reference:

Explanation:



QUESTION 65

Which two statements are true about deploying and using vSphere Replication? (Choose two.)

- A. ESXi hosts managed by a single vCenter Server instance require a connection between the two vSphere Replication appliances.
- B. Sites managed by different vCenter Server instances require a connection between the two vSphere Replication appliances.
- C. Sites managed by different vCenter Server instances require the use of Site Recovery Manager and a connection between the two vSphere Replication appliances.
- D. ESXi hosts managed by a single vCenter Server instance require a single vSphere Replication appliance.

Correct Answer: BD

Section: (none)

Explanation

Explanation/Reference:

Explanation:

To use vSphere Replication between two sites managed by different vCenter Server instances, you must configure a connection between the two vSphere Replication appliances.

You can complete this process on either site on which you have installed a vSphere Replication appliance. If you are using an untrusted certificate, certificate warnings might appear during the process.

Alternatively, you can use vSphere Replication to replicate virtual machines between different ESXi hosts that the same vCenter Server manages. In this case, you deploy only one vSphere Replication appliance and you do not need to connect the primary and secondary sites.

Reference: https://pubs.vmware.com/vsphere-51/index.jsp?topic=%2Fcom.vmware.vsphere.replication_admin.doc%2FGUID-FFBF959C-5C05-42C0-A2FE3688AD55B6EF.html

QUESTION 66

An administrator configures vSphere Replication for a virtual machine and enables multiple point in time (PIT) instances under the recovery settings in the Configure Replication wizard.

Which two statements are correct for vSphere Replication with multiple point in time instances enabled? (Choose two.)

- A. vSphere Replication retains a number of snapshot instances of the virtual machine on the target site based on the retention policy that you specify.
- B. vSphere Replication uses the virtual machine's snapshot instances to define the target site Point in Time instance based on the retention policy that you specify.
- C. vSphere Replication does not support virtual machines with snapshots.
- D. vSphere Replication supports virtual machines with snapshots.

Correct Answer: AD

Section: (none)

Explanation

Explanation/Reference:

Explanation:

When you configure replication of a virtual machine, you can enable multiple point in time (PIT) instances in the recovery settings in the Configure Replication wizard. vSphere Replication retains a number of snapshot instances of the virtual machine on the target site based on the retention policy that you specify.

vSphere Replication supports maximum of 24 snapshot instances. After you recover a virtual machine, you can revert it to a specific snapshot.

During replication, vSphere Replication replicates all aspects of the virtual machine to the target site, including any potential viruses and corrupted applications. If a virtual machine suffers from a virus or corruption and you have configured vSphere Replication to keep PIT snapshots, you can recover the virtual machine and then revert it to a snapshot of the virtual machine in its uncorrupted state.

Reference: https://pubs.vmware.com/srm-55/index.jsp?topic=%2Fcom.vmware.srm_admin.doc%2FGUID-F3C8A2E9-183E-4DFF-A7D1-43CAEE584149.html

QUESTION 67

Which three actions can be taken as a result of executing the vSphere Update Manager 6.x scan and remediation wizards? (Choose three.)

- A. Install and upgrade software in virtual machines.
- B. Upgrade the firmware on ESXi host devices.
- C. Upgrade and Patch ESXi hosts.

- D. Install and update third-party software on hosts.
- E. Upgrade virtual machine hardware.

Correct Answer: CDE

Section: (none)

Explanation

Explanation/Reference:

Explanation: vSphere Update Manager 6.x scan and remediation wizards offer upgrade and patch ESXi hosts, install and update third-party software and upgrade virtual machine hardware.

Reference: http://www.vmware.com/pdf/vsp_vum_40_admin_guide.pdf

QUESTION 68

Which three steps must be taken to use vSphere Update Manager 6.x to upgrade an ESXi 5.5 host to vSphere 6.x? (Choose three.)

- A. Download an ESXi Image.
- B. Configure the vSphere Update Manager Download Service.
- C. Create a baseline and attach it to the ESXi Host.
- D. Scan the vCenter Content Library for the ESXi Image.
- E. Remediate the ESXi Host.



Correct Answer: ACE

Section: (none)

Explanation

Explanation/Reference:

Explanation:

First, download an ESXi image. Create a baseline and attach it to the ESXi host. Now remediate the host.

Reference: https://kb.vmware.com/selfservice/microsites/search.do?language=en_US&cmd=displayKC&externalId=2109711

QUESTION 69

vSphere Update Manager allows which two virtual machine attributes to be upgraded? (Choose two.)

- A. Virtual machine firewall policies for NSX.
- B. Software Packages in the virtual machine.
- C. Virtual machine Hardware Version.
- D. VMware Tools Upgrade.

Correct Answer: CD

Section: (none)

Explanation

Explanation/Reference:

Explanation:

You can upgrade virtual machine hardware version and the VMware tools.

Reference: <https://www.vmware.com/support/vsphere5/doc/vsphere-update-manager-50-release-notes.html>

QUESTION 70

An administrator enables vSphere High Availability (HA) on an existing cluster with a large number of hosts and virtual machines. The administrator notices that the setup of vSphere HA on some of the hosts is failing.

What step, if taken, might resolve this issue?

- A. Increase the value of the config.vpxd.das.electionWaitTimeSec setting.
- B. Set the value of vpxd.das.aamMemoryLimit to 256.
- C. Set the value of the das.useDefaultIsolationAddress setting to False.
- D. Increase the value of the das.iostatsinterval setting.

Correct Answer: A

Section: (none)

Explanation

Explanation/Reference:

Explanation:

Set the vCenter Server advanced option config.vpxd.das.electionWaitTimeSec to value=240. Once this change is made, the time outs do not occur.

Reference: <https://pubs.vmware.com/vsphere-51/index.jsp?topic=%2Fcom.vmware.vsphere.troubleshooting.doc%2FGUID-A93A0F08-DB77-4850-B87D93CCDF407D8D.html>

QUESTION 71

What are two possible causes of Storage Distributed Resource Scheduler (SDRS) being disabled on one or more virtual machine disks in a datastore cluster? (Choose two.)

- A. The virtual machine has vSphere Fault Tolerance disabled.
- B. The virtual machine is a template.
- C. The virtual machine swap file is on a shared datastore.
- D. The disk is a CD-ROM/ISO file.

Correct Answer: BD

Section: (none)

Explanation

Explanation/Reference:

Explanation:

Possible causes of SDRS being disabled might be related to the fact that the virtual machine is a template or the disk is a CD-ROM or an ISO file.

Reference: <https://www.vmware.com/files/pdf/vmw-vspher-5-1-stor-drs-uslet-101-web.pdf>

QUESTION 72

What may be a cause for failure to unmount an NFS datastore?

- A. It has active snapshot files.
- B. It is being used for High Availability (HA) heartbeat.
- C. It is part of a Cluster.
- D. It is managed by Distributed Resource Scheduler (DRS).

Correct Answer: B

Section: (none)

Explanation

Explanation/Reference:

Explanation: vSphere HA heartbeating does not prevent you from unmounting the datastore. If a datastore is used for heartbeating, unmounting it might cause the host to fail and restart any active virtual machine. If the heartbeating check fails, the vSphere Client displays a warning.

Reference: https://pubs.vmware.com/vsphere-50/index.jsp?topic=%2Fcom.vmware.vsphere.storage.doc_50%2FGUID-1B56EF97-F60E-4F21-82A78F2A7294604D.html

QUESTION 73

An administrator is troubleshooting basic network connectivity issues.

Which two scenarios are potential issues that this administrator might face? (Choose two.)

- A. The vSwitch is not attached to the correct physical network.
- B. The portgroup is not configured to use correct VLAN.
- C. Traffic shaping is configured incorrectly.
- D. Jumbo frames is configured incorrectly.

Correct Answer: AB



Section: (none)

Explanation

Explanation/Reference:

Explanation:

Common network connectivity issues can happen anytime during the operation. The vSwitch is not attached to the correct physical network or the portgroup is not configured to use correct VLAN might be some of the causes that admin has to face during network connectivity. Reference:

<http://blogs.vmware.com/kb/2013/02/troubleshooting-network-teaming-problems-in-esxesxi.html>

QUESTION 74

Why are some virtual machines orphaned after rebooting a High Availability (HA) enabled host?

- A. The Orphaned virtual machines have HA restart disabled.
- B. The Orphaned virtual machines moved recently and the change did not persist.
- C. The host is attached to failed storage.
- D. The host just came out of maintenance mode.

Correct Answer: A

Section: (none)

Explanation

Explanation/Reference:

Explanation:

If the host is rebooted within an hour after the virtual machines are moved or powered on, the vmInventory.xml file does not persist and hostd does not report these virtual machines as registered on the host. In an HA-enabled cluster, this condition impacts only the virtual machines with HA restart disabled.

Reference: https://kb.vmware.com/selfservice/microsites/search.do?language=en_US&cmd=displayKC&externalId=1003742#reboothostonehour

QUESTION 75

An administrator is attempting to power on a virtual machine, but is unable to do so.

Which two reasons are probable causes of the failure? (Choose two.)

- A. Storage access to the virtual machine swap file has been lost.
- B. One of the virtual machine VMDK files is locked.
- C. Virtual machine is running CentOS 7.0 64-bit.
- D. Virtual machine has Hyper-Threading enabled.

Correct Answer: AB



Section: (none)
Explanation

Explanation/Reference:

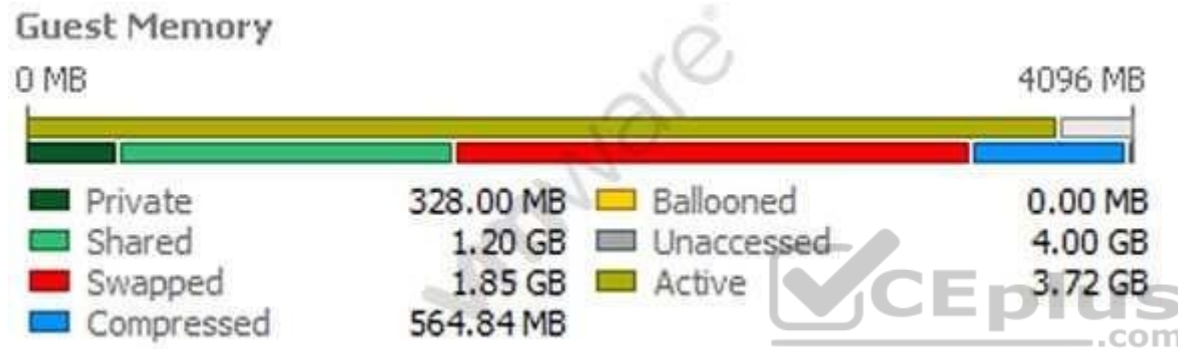
Explanation:

One of the reasons it is doing so is because the storage access to the VM machine swap file has been lost or one of the VMDK files is locked.

Reference: https://kb.vmware.com/selfservice/microsites/search.do?language=en_US&cmd=displayKC&externalId=10051

QUESTION 76

Refer to the Exhibit.



-- Exhibit --

A 4 GB Memory virtual machine is experiencing extended memory issues, as shown in the Exhibit.

What potential issues could be attributed to this memory pressure?



<https://vceplus.com/>

- A. A limit is imposed on the virtual memory of this virtual machine.
- B. The Balloon driver has been uninstalled.
- C. A limit has been imposed on the Virtual CPU of the virtual machine.
- D. Storage IO control has been enabled for the virtual machine causing the swapped memory.

Correct Answer: AB

Section: (none)

Explanation

Explanation/Reference:

Explanation:

One of the issue might be that the limit is imposed on the virtual memory of this VM. Secondly, the balloon driver has been uninstalled. That's why it is experiencing memory issues.

Reference:

QUESTION 77

An administrator has unsuccessfully attempted several times to install an Operating System inside a virtual machine. The administrator finds that the installation fails at random intervals.

Which two actions can be taken to resolve this issue? (Choose two.)

- A. Verify the md5sum and if invalid, download the installation files again.
- B. Attempt the installation an additional time.
- C. Attempt to use a different installation media or installation method.
- D. Create a new virtual machine and attempt the installation with the existing media.

Correct Answer: AC

Section: (none)

Explanation

Explanation/Reference:

Explanation:

First verify md5sum and if it is invalid, download installation files again. Secondly, attempt to use a different installation media because the one used might be corrupt.

Reference:

QUESTION 78

A Fault Tolerance (FT) virtual machine with four vCPUs is experiencing high latency when performing ICMP and Application tests.

What are three potential causes that may be attributing to this latency? (Choose three.)

- A. The FT network has insufficient bandwidth and is running on a 1GB Link.
- B. The FT network is on a particularly high latency link.
- C. The FT network has been configured with Network I/O Control.
- D. The FT virtual machine is running an e1000 network adapter.
- E. The FT virtual machine is running on poor performing network-based storage.

Correct Answer: ABC

Section: (none)

Explanation

Explanation/Reference:

Explanation:

The latency can be caused by FT network having insufficient bandwidth and is running on a 1 GB link or the network is on a particularly high latency risk. The other reason might be that the FT network has been configured with network I/O control. Reference:

QUESTION 79

VMware tools is failing to install on a Microsoft Windows virtual machine.

What are two possible situations that would prevent the installation? (Choose two.)

- A. The VMware tools installation media is corrupt.
- B. The incorrect Operating System was selected in the virtual machine options.
- C. The software prerequisites have not been installed.
- D. The prerequisite services have not been started.

Correct Answer: AB

Section: (none)

Explanation

Explanation/Reference:

Explanation:

Among the probable causes, one might be that the VMware tools installation media is corrupt or the incorrect OS was selected in the virtual machine options.

Reference: https://kb.vmware.com/selfservice/microsites/search.do?language=en_US&cmd=displayKC&externalId=1012693

QUESTION 80

An administrator is attempting to power on a virtual machine, but the task is hanging at 95%.

What three scenarios best explain why this problem is happening? (Choose three.)

- A. A virtual machine question is currently being posed to the administrator.
- B. Another task for the virtual machine or other component is already in progress.
- C. The VMware High Availability cluster has insufficient resources to guarantee failover.
- D. The host has lost access to the storage device containing the virtual machine files. E. The host is under resource contention and unable to power on the virtual machine.

Correct Answer: ABC

Section: (none)

Explanation

Explanation/Reference:

Explanation:

It might be that another task for the virtual machine or another component is already in progress or that the VMware HA cluster has insufficient resources to guarantee failover.

Reference: https://kb.vmware.com/selfservice/search.do?cmd=displayKC&docType=kc&docTypeID=DT_KB_1_1&externalId=1027096

QUESTION 81

An application running in a virtual machine is experiencing performance issues. When utilizing performance monitoring utilities, it is noted that the CPU Utilization of the application is at 100%.

Which two scenarios are probable causes of the CPU contention for the application? (Choose two.)

- A. There is a network I/O constraint.
- B. There is a storage I/O constraint.
- C. There is insufficient disk space assigned to the virtual machine.
- D. The application is not virtualization aware.

Correct Answer: AB

Section: (none)

Explanation

Explanation/Reference:

Explanation:

There are two possible causes. One is a network I/O constraint and the other is storage I/O constraint.

Reference: https://kb.vmware.com/selfservice/microsites/search.do?language=en_US&cmd=displayKC&externalId=2001003

QUESTION 82

A user is trying to retrieve objects from a SharePoint server and finds the request is taking an excessive amount of time. An administrator tries to isolate the issue and notes the following:

- Application performance is poor when compared to virtual machines on other hosts.
- Performance improves when the virtual machine is moved to another host. ▪

The virtual machine encounters higher than expected CPU %Ready times.

What conclusion can be reached regarding the performance issues for this virtual machine?

- A. Host Power Management is directly impacting virtual machine performance.
- B. The virtual machine has a large number of snapshots.
- C. The Path Selection Policy for the storage device is set differently on the affected host.
- D. Network I/O control is configured for the portgroup.

Correct Answer: A

Section: (none)

Explanation



Explanation/Reference:

Explanation:

Processor Power Management (Power Saving, Power Scaling) is impacting application performance on virtual machines.

Reference: https://kb.vmware.com/selfservice/microsites/search.do?language=en_US&cmd=displayKC&externalId=1018206

QUESTION 83

When attempting to access a virtual machine, an administrator is unable to login using the vSphere credentials.

What two options are probable causes of the authentication failure? (Choose two.)

- A. The vSphere credentials have not been granted permissions.
- B. The vSphere credentials are granted read-only permissions.
- C. The vSphere credentials are granted no-access permissions.
- D. The vSphere credentials are not a member of the local administrator group.

Correct Answer: AB

Section: (none)

Explanation

Explanation/Reference:

Explanation:

While the details of authentication and authorization differ between ESX/ESXi and vCenter Server, the model itself is the same for both system. It relies on privileges, roles, and permissions.

Reference: https://pubs.vmware.com/vsphere-50/index.jsp?topic=%2Fcom.vmware.wssdk.pg.doc_50%2FPG_Ch6_Authenticate_Authorize.8.3.html

QUESTION 84

A physical Windows 2008 R2 Server is converted to a virtual machine using VMware vCenter Converter. Upon completion of the conversion and subsequent power on operation, the virtual machine fails to boot and the message below is observed in the Console of the virtual machine:

STOP 0x0000007B INACCESSIBLE_BOOT_DEVICE

Which two potential issues may be causing this boot failure? (Choose two.)

- A. An incorrect SCSI controller was selected during conversion.
- B. Incompatible software drivers were migrated into the virtual machine from the source machine.
- C. The vmdk file backing the virtual machine was thick provisioned.
- D. A snapshot was taken immediately after the conversion completed.

Correct Answer: AB

Section: (none)

Explanation

Explanation/Reference:

Explanation:

It might be the incorrect SCSI controller was selected during conversion or the incompatible software drivers were migrated into the VM from source machine.

Reference: https://kb.vmware.com/selfservice/microsites/search.do?language=en_US&cmd=displayKC&externalId=1016330

QUESTION 85

When attempting to power on a Virtual Machine you observe the following error:

Cannot open the disk '/vmfs/volumes/volume/vm/vm-000002.vmdk' or one of the snapshot disks it depends on.

Which three actions will be the best solutions to address this problem? (Choose three.)

- A. Verify that the virtual machine's disk files are present.

- B. Investigate the host and virtual machine log files.
- C. Verify the vmdk descriptor files and if required, recreate them.
- D. Delete the disk file preventing the power on operation.
- E. Migrate or register the virtual machine to a different host.

Correct Answer: ABC

Section: (none)

Explanation

Explanation/Reference:

Explanation:

First verify that the VM disk files are present. Check host and VM log files. Verify vmdk descriptor files and recreate them if required.

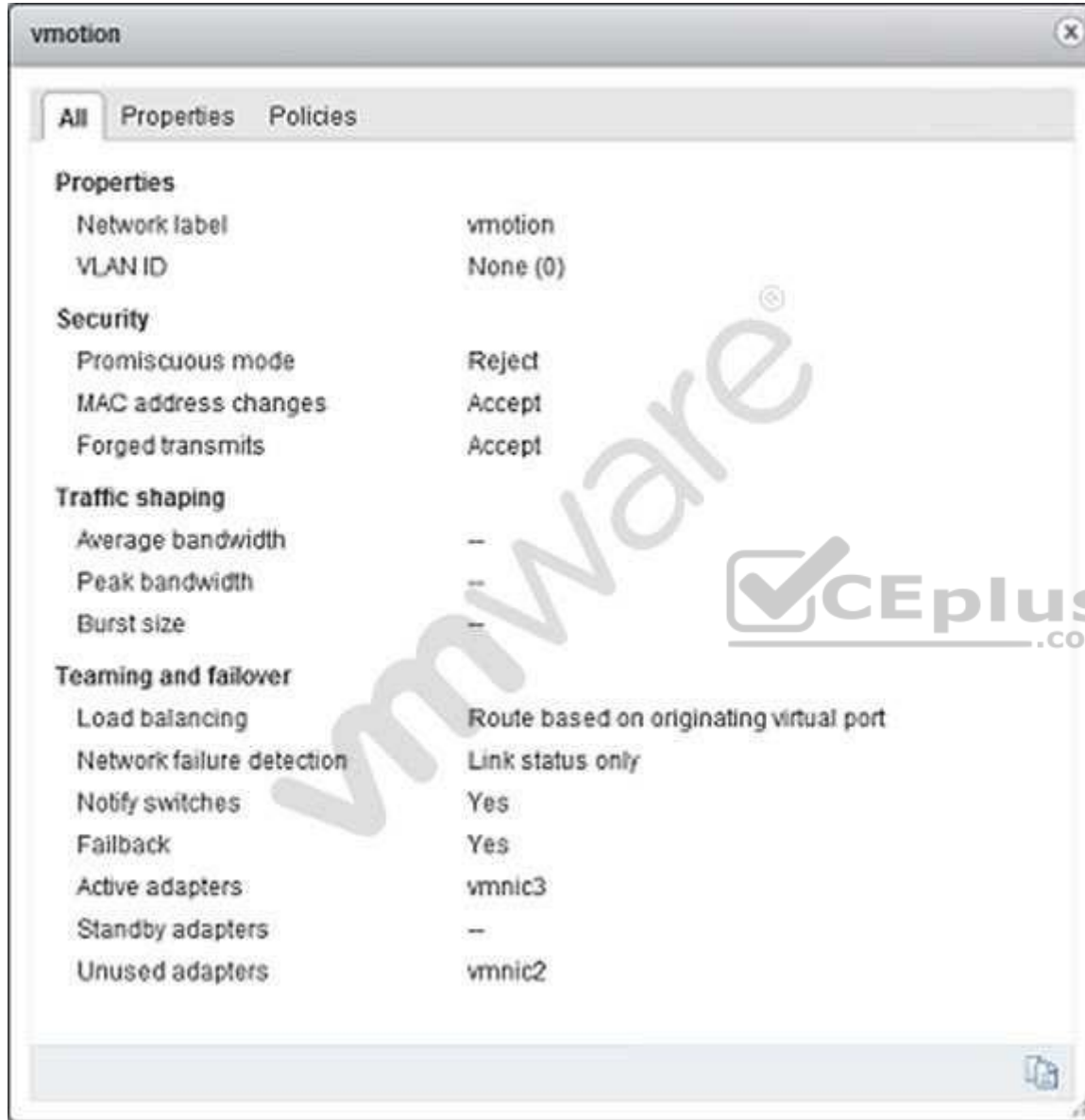
Reference: https://kb.vmware.com/selfservice/microsites/search.do?language=en_US&cmd=displayKC&externalId=1004232

QUESTION 86

Refer to the Exhibit.

-- Exhibit --





An administrator has been given requirements to configure vMotion for a new virtual machine. The configuration should:

- Provide Network Redundancy ▪
- Use VLAN 550
- Be secured against anyone trying to spoof communication

The vSwitch1 configuration is shown in the Exhibit.

Which three changes should be made to meet the stated requirements? (Choose three.)

- A. The VLAN ID must be set appropriately.
- B. The default values for MAC Address Changes and Forged Transmits must be altered.
- C. The teaming and failover adapters must be set appropriately.
- D. The Traffic Shaping configuration must be altered.
- E. The Load Balancing Policy must be set appropriately.

Correct Answer: ABC

Section: (none)

Explanation

Explanation/Reference:

Explanation:

First, VLAN ID must be set appropriately. Default values for Mac address changes and forged transmits must be altered and the teaming and failover adapters must be set accordingly. Reference:

QUESTION 87

Refer to the Exhibit.



Adapter Details

Properties Devices **Paths**

Enable Disable

Runtime Name	Target	LUN	Status
vmhba2:C0:T3:L0	50:06:01:60:c7:20:6a:a4 50:06:0...	0	◆ Active (I/O)
vmhba2:C0:T2:L0	50:06:01:60:c7:20:6a:a4 50:06:0...	0	◆ Active (I/O)
vmhba2:C0:T1:L0	50:06:01:60:c7:20:6a:a4 50:06:0...	0	◇ Dead (I/O)
vmhba2:C0:T0:L0	50:06:01:60:c7:20:6a:a4 50:06:0...	0	◆ Active (I/O)

A storage administrator is not seeing full utilization of all bandwidth from an ESXi host. The vSphere administrator observes the adapter details, as shown in the Exhibit.

What is the probable cause of this issue?

- A. Another path needs to be used to allow full utilization of the bandwidth.
- B. The array is not setup to use the correct multipathing policy.
- C. There are no virtual machines on the host.
- D. No traffic is being sent across it because a path failed.

Correct Answer: D

Section: (none)

Explanation

Explanation/Reference:

Explanation:

It seems that no traffic is being sent across it due to the path that has failed.

Reference:

QUESTION 88

An administrator is monitoring a High Availability (HA) and Distributed Resource Scheduler (DRS) enabled cluster and has noticed that virtual machines in the cluster are being migrated without user intervention.

Why is this happening?

- A. The DRS Automation level is set to Fully Automated.
- B. The Automation level is set to Automatic.
- C. The DPM Threshold is set to Aggressive.
- D. The Power Management feature is configured.

Correct Answer: A

Section: (none)

Explanation

Explanation/Reference:

Explanation:

When the DRS automation level is set to fully automated, virtual machines in the cluster might be migrated without user intervention. Reference: <http://www.uf-it.eu/Datenblaetter/VMware%20vsphere%20evaluators%20guide.pdf>

QUESTION 89

An administrator is installing a new network card in an ESXi 6.x host that is part of a vSphere cluster. When the host is placed into maintenance mode, the vSphere Web Client displays the progress bar at 2% for over 30 minutes.

Which two are likely reasons for this occurrence? (Choose two.)

- A. Maintenance mode is unable to migrate all virtual machines from the host.
- B. There is a large number of virtual machines that must be migrated from the host.
- C. VMware High Availability is in the process of reconfiguring the cluster.
- D. Each virtual machine on the ESXi host must be reconfigured to recognize the new adapter.

Correct Answer: AB

Section: (none)

Explanation

Explanation/Reference:

Explanation:

The maintenance mode is unable to migrate all virtual machines from the host. There is a large number of VM s that must be migrated first.
Reference: https://kb.vmware.com/selfservice/microsites/search.do?language=en_US&cmd=displayKC&externalId=1005241

QUESTION 90

An administrator logs into the vSphere Web Client, but is unable to see any hosts and clusters.

Which two options could fix the problem? (Choose two.)

- A. Verify that the client web browser and vCenter Server are in the same broadcast domain.
- B. Verify that the vCenter Server system is registered with the same Platform Services Controller as the vSphere Web Client.



<https://vceplus.com/>



- C. Log in to the vCenter Server as a user within the Active Directory domain.
- D. Log in to the vSphere Web Client as a user with permissions on the vCenter Server system.

Correct Answer: BD

Section: (none)

Explanation

Explanation/Reference:

Explanation:

Log in to the vSphere Web Client as a user with permissions on the vCenter Server system. Verify that the vCenter Server system is registered with the same Platform Services Controller as the vSphere Web Client.

Reference: https://kb.vmware.com/selfservice/microsites/search.do?language=en_US&cmd=displayKC&externalId=2113917

QUESTION 91

Users of an application are reporting performance issues. The following performance values are observed in the vSphere Web Client:

- Host CPU utilization is 90%

- Virtual Machine memory utilization is consistently greater than 90% ▪ CPU Ready values are higher than 20%

What could be the cause of the application performance issue?

- A. The host is lacking the CPU resources required to meet the demand.
- B. The host is lacking the memory resources required to meet the demand.
- C. The virtual machine is lacking the CPU resources required to meet the demand.
- D. The virtual machine is lacking the memory resources required to meet the demand.

Correct Answer: A

Section: (none)

Explanation

Explanation/Reference:

Explanation:

A short spike in CPU usage indicates that you are making the best use of the host resources. However, if the value is constantly high, the host is probably lacking the CPU required to meet the demand. Reference:

QUESTION 92

An administrator reports that the System Event log data is only available for 24 hours when reviewing the Hardware Status tab.

Which condition could be responsible for the loss of data?

- A. A Reset event log was executed.
- B. The statistical collection level was set to a value of 1.
- C. The boot disk of the host is corrupt.
- D. Syslog has been configured at the vCenter Server level.

Correct Answer: A

Section: (none)

Explanation

Explanation/Reference:

Explanation:

It clearly shows that the reset event log was executed that's why data is available for 24 hours only.

Reference: https://kb.vmware.com/selfservice/microsites/search.do?language=en_US&cmd=displayKC&externalId=2061093

QUESTION 93

An administrator receives a report that no real time statistics are available for a virtual machine in the vCenter Server inventory.

Which two statements indicate likely causes of the problem? (Choose two.)

- A. The virtual machine is powered off.
- B. The host containing the virtual machine is disconnected from vCenter Server.
- C. There is insufficient real time data to display the information.
- D. The vCenter Server service is not running.

Correct Answer: AB

Section: (none)

Explanation

Explanation/Reference:

Explanation:

The most likely cause might be that the virtual machine is powered off or the host containing the VM is disconnected from the vCenter server.

Reference: https://kb.vmware.com/selfservice/microsites/search.do?language=en_US&cmd=displayKC&externalId=1003979

QUESTION 94

A virtual machine is experiencing performance issues. The following performance metrics are observed:

- CPU usage value for the virtual machine is above 90%
- CPU ready value for the virtual machine is above 20%

Which two activities will likely resolve the performance issues? (Choose two.)

- A. Set a CPU reservation for the virtual machine.
- B. Increase the CPU limit on the virtual machine.
- C. Decrease CPU shares equally for all virtual machines on the host.
- D. Increase CPU shares equally for all virtual machines on the host.

Correct Answer: AB

Section: (none)

Explanation

Explanation/Reference:

Explanation:

Set a CPU reservation for the virtual machine and increase the CPU limit on the virtual machine.

Reference:

QUESTION 95

An administrator deploys vRealize Operations into a vSphere 6.x environment. After the deployment, the administrator notices that badges are not appearing.

What is a likely cause of this behavior?

- A. Badges do not appear until you register vRealize Operations with vCenter Server.
- B. Badges do not appear until you register a vCenter Server in vRealize Operations.
- C. The vRealize Operations appliance needs to be redeployed.
- D. The vCenter Server appliance needs to be redeployed.

Correct Answer: A

Section: (none)

Explanation

Explanation/Reference:

Explanation:

If the badges are not appearing, check if you registered vRealize operations with vcenter server.

Reference: <https://www.vmware.com/support/vrops/doc/vrops-60-release-notes.html>

QUESTION 96

An administrator is unable to create the first group in a new vRealize Operations environment.

What is the likely cause of the problem?

- A. There are no group types defined.
- B. The group is not defined in SSO.
- C. There are more than 32 group types defined.
- D. The description for the group is not provided.

Correct Answer: A

Section: (none)

Explanation

Explanation/Reference:

Explanation: There is no group types defined when administrator is unable to create the first group in a new vRealize Operations environment.

Reference: <https://www.vmware.com/support/vrops/doc/vrops-601-release-notes.html>

QUESTION 97

An administrator is only able to see the Health Badge when using the vRealize Operations user interface. What is the likely cause of this behavior?

- A. The vRealize Operations Foundation License is in use.
- B. The vmware-sps service failed to start.
- C. The vRealize Operations Standard License is in use.
- D. The vmware-rbd-watchdog service failed to start.

Correct Answer: A

Section: (none)

Explanation

Explanation/Reference:

Explanation:

It seems that the vRealize operations foundation license is in use.

Reference: <https://pubs.vmware.com/vsphere-60/index.jsp?topic=%2Fcom.vmware.vsphere.vcops.doc%2FGUID-AD22D6AF-C76A-4D25-8B8DE0CCC1B35BC7.html>

QUESTION 98

Which two are true about the Risk badge in vRealize Operations? (Choose two.)

- A. The Risk badge indicates potential future problems that may degrade the performance of the system.
- B. Risks may require attention in the near future.
- C. The Risk badge indicates problems that are degrading performance of the system.
- D. Risks require attention now to correct system performance problems.

Correct Answer: AB

Section: (none)

Explanation

Explanation/Reference:

Explanation:

The Risk badge indicates potential problems that might eventually degrade the performance of the system. Risk does not necessarily imply a current problem. Risk indicates problems that might require your attention in the near future, but not immediately.

Reference: <https://pubs.vmware.com/vsphere-60/index.jsp?topic=%2Fcom.vmware.vsphere.vcops.doc%2FGUID-30184AD9-6790-48DC-96C54A38DEEFA3A.html>

QUESTION 99

Which three are architecture components of vRealize Operations? (Choose three.)

- A. Identity Server
- B. Administrative Server
- C. Analytics Server
- D. Database Server
- E. Connection Broker

Correct Answer: BCD

Section: (none)

Explanation

Explanation/Reference:

Explanation:

Administrative, analytics and database server are active components of vRealize operations.

Reference: https://books.google.com.pk/books?id=VD6qCQAAQBAJ&pg=PA5&lpg=PA5&dq=architectural+components+of+vrealize+operation+administrative+server+analytics+server+database+server&source=bl&ots=GfIG7QQwWL&sig=0vLuiJryvZlqvon1Gc1fuo8e0tg&hl=en&sa=X&ved=0ahUKEwjn79m_gdDNAhVERo8KHQ1VC3QQ6AEIRDAH#v=onepage&q=architectural%20components%20of%20vrealize%20operation%20administrative%20server%20analytics%20server%20database%20server&f=false

QUESTION 100

A vCenter Operations Manager 5.7 environment is upgraded to vRealize Operations. After the upgrade, the analytics services fail to start.

Which three steps must be taken to resolve the problem? (Choose three.)

- A. Take the vRealize Operations cluster offline.
- B. Delete the activity persistence files.
- C. Bring the cluster back online.
- D. Remove any unresponsive nodes.
- E. Stop the CaSA service.

Correct Answer: ABC

Section: (none)

Explanation

Explanation/Reference:

Explanation:

If the analytics failed to start, take the vRealize operations cluster offline, delete activity persistence files and bring the cluster back online to start the failed services. Reference: <https://www.vmware.com/support/vrops/doc/vrops-601-release-notes.html>

QUESTION 101

Which two badges are major badges in vRealize Operations? (Choose two.)

- A. Risk
- B. Efficiency
- C. Workload
- D. Faults

Correct Answer: AB

Section: (none)

Explanation

Explanation/Reference:

Explanation: vC Ops has 3 major badges and their status depends on the minor badges whose scores get rolled up to make up the major badges. Those 3 major badges are Health, Risk, and Efficiency. Each of these 3 badges are weighted combinations of minor badges. Thus, the major badges are the color and numerical score that they are because of the status of the minor badges that they are summarizing.

Reference: <http://blogs.vmware.com/management/2014/04/david-davis-on-vcenter-operations-post-8-understanding-vcenter-operations-badges.html>

QUESTION 102

A user wants to monitor a business-critical virtual machine to ensure that it doesn't run out of resources.

What metric could be monitored in vRealize Operations to address this concern?

- A. Time Remaining badge
- B. Compliance badge
- C. Reclaimable Waste badge
- D. Density badge

Correct Answer: A

Section: (none)

Explanation

Explanation/Reference:

Explanation:

You need to monitor time remaining badge to ensure virtual machine doesn't run out of resources.

Reference: <http://blogs.vmware.com/tam/files/2015/02/vRealize-Operations-5.8-Guide1.pdf>

QUESTION 103

After selecting an object in vRealize Operations, how can a user compare the badge values of related child objects?

- A. Use the Scoreboard tab
- B. Use the Relationship tab
- C. Use the Members tab
- D. Use the Overview tab

Correct Answer: A

Section: (none)

Explanation

Explanation/Reference:

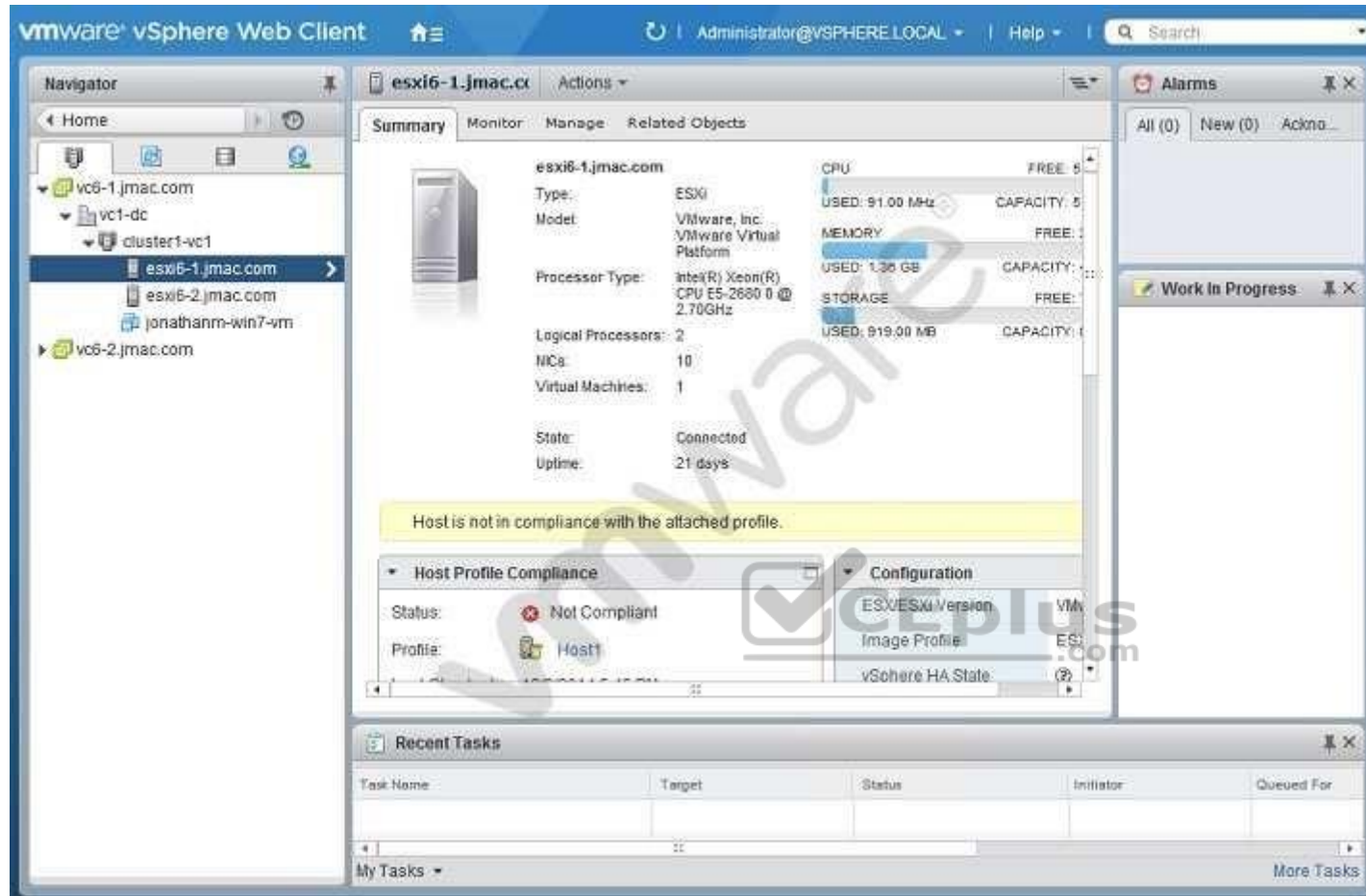
Explanation:

Use scoreboard tab to compare the badge values of related child objects.

Reference: <http://blogs.vmware.com/management/2014/08/david-davis-vcenter-operations-post-14-capacity-analysis-virtual-machines.html>

QUESTION 104

Refer to the Exhibit.



An administrator logs into the vSphere Web Client and sees the warning shown in the Exhibit. During a change control window, the warning was addressed.

What should be done to verify that the host is no longer showing the warning?

- Run a Remediate host operation.
- Recheck the compliance of the host.
- Restart the host to get rid of the warning.

D. Install VMware tools to clear the warning.

Correct Answer: B

Section: (none)

Explanation

Explanation/Reference:

Explanation:

To make sure the host is no longer showing the warning, recheck the compliance of the host.

Reference:

QUESTION 105

Refer to the Exhibit.

Adapter Details

Properties Devices **Paths**

Enable Disable

Runtime Name	Target	LUN	Status
vmhba2:C0:T3:L0	50:06:01:60:c7:20:6a:a4 50:06:0...	0	◆ Active (I/O)
vmhba2:C0:T2:L0	50:06:01:60:c7:20:6a:a4 50:06:0...	0	◆ Active (I/O)
vmhba2:C0:T1:L0	50:06:01:60:c7:20:6a:a4 50:06:0...	0	◇ Disabled
vmhba2:C0:T0:L0	50:06:01:60:c7:20:6a:a4 50:06:0...	0	◆ Active

A storage administrator has reported that full utilization of all bandwidth from an ESXi 6.x host is not being seen. In troubleshooting the issue, the Adapter details are shown in the Exhibit.

Based on the exhibit, what is cause of the issue?

- A. The array is not setup to use the correct multipathing policy.
- B. There are no virtual machines on the ESXi host.
- C. Not all links are used because a path is disabled.

D. Another path needs to be configured.

Correct Answer: C

Section: (none)

Explanation

Explanation/Reference:

Explanation:

The cause might be that not all links are used because a path is disabled as you can see in the third row.

Reference:

